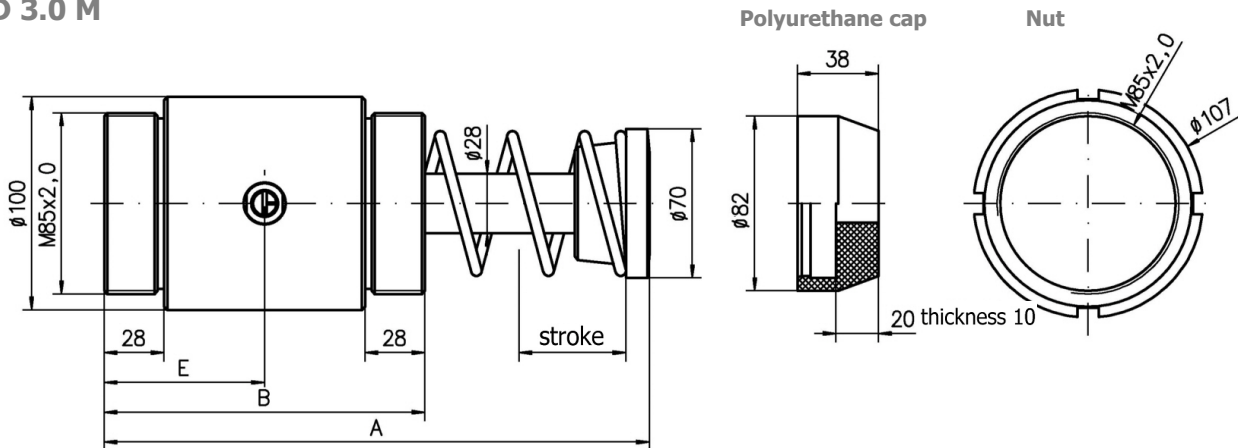




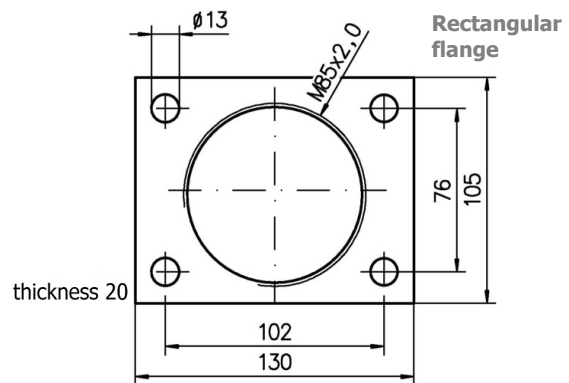
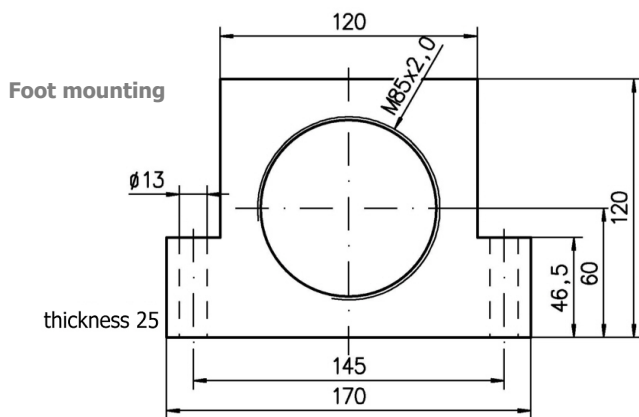
- Fully adjustable.
- Temperature range from - 10 °C to + 80 °C (higher temperature up to + 120 °C on request).
- Fitting according to your requirements.
- Polyurethane cap optional.
- Install a mechanical stop 1 mm before end of the stroke, do not bottoming under load to prevent damage.

STD 3.0 M



Dimensions:

Type	Stroke	A	B	E
		[mm]		
STD 3.0 M x 2	50	255	150	75
STD 3.0 M x 3.5	90	335	190	95
STD 3.0 M x 5	125	410	225	112
STD 3.0 M x 6.5	165	505	265	132
STD 3.0 M x 8	200	600	300	150



Technical data:

Type	Stroke [mm]	Thread	Energy capacity		Effective mass [kg]	Spring force [N]	Weight [kg]
			[Nm/stroke]	[kNm/h]			
STD 3.0 M x 2	50	M85x2,0	2100	720	190 - 31000	140 - 265	7,5
STD 3.0 M x 3.5	90	M85x2,0	3600	1030	220 - 35000	110 - 200	9,0
STD 3.0 M x 5	125	M85x2,0	5100	1250	228 - 40000	105 - 290	11,0
STD 3.0 M x 6.5	165	M85x2,0	6500	1550	310 - 43000	120 - 350	13,2
STD 3.0 M x 8	200	M85x2,0	10000	2100	330 - 48000	170 - 580	16,0