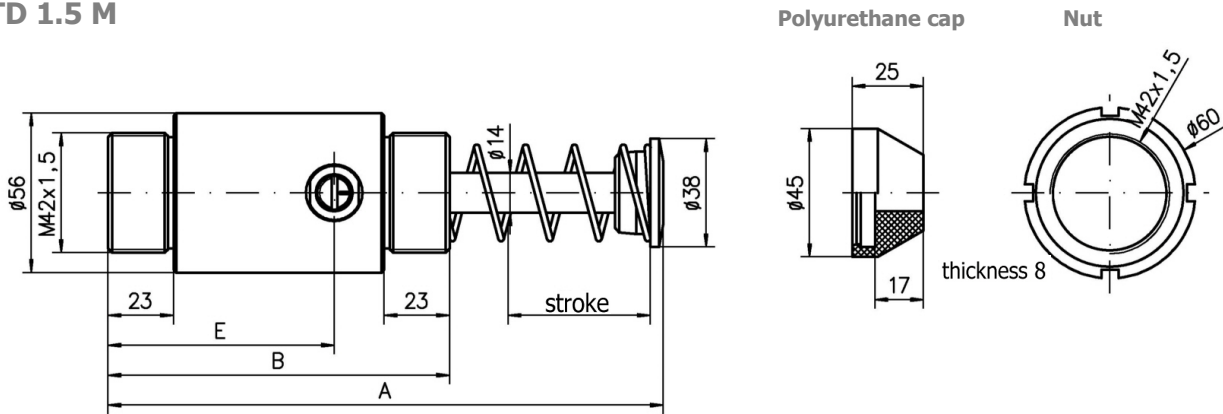




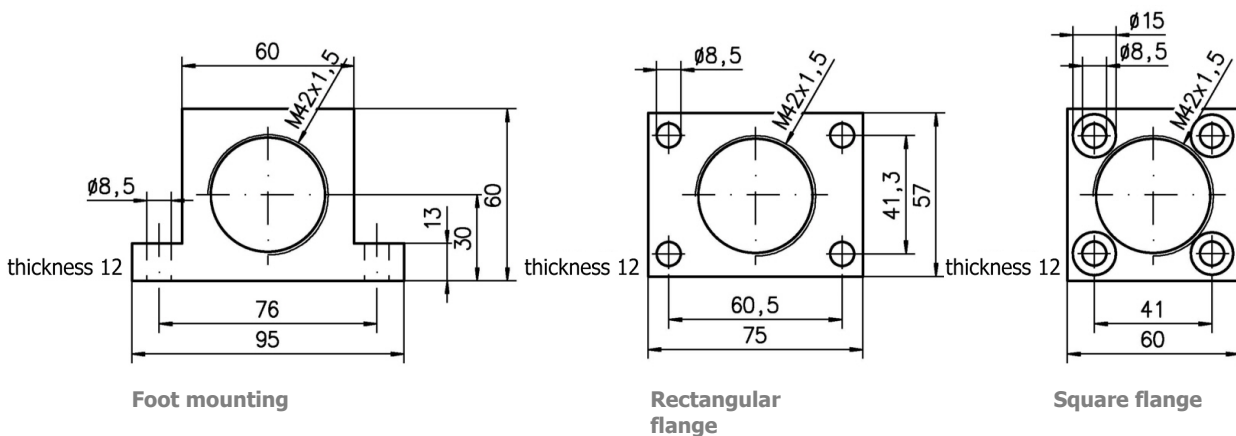
- Fully adjustable.
- Temperature range from – 10 °C to + 80 °C (higher temperature up to + 120 °C on request).
- Fitting according to your requirements.
- Polyurethane cap optional.
- Install a mechanical stop 1 mm before end of the stroke, do not bottoming under load to prevent damage.

STD 1.5 M



Dimensions:

Type	Stroke	A	B	E
		[mm]		
STD 1.5 M x 1	25	144	94	53
STD 1.5 M x 2	50	195	120	79,5
STD 1.5 M x 3	75	246	145	104,5



Technical data:

Type	Stroke [mm]	Thread	Energy capacity		Effective mass [kg]	Spring force [N]	Weight [kg]
			[Nm/stroke]	[kNm/h]			
STD 1.5 M x 1	25	M42x1,5	250	125	27 - 3600	60 - 90	1,4
STD 1.5 M x 1 NG	25	M42x1,5	250	125	3000 - 110000	60 - 90	1,4
STD 1.5 M x 2	50	M42x1,5	500	148	43 - 6350	70 - 150	1,7
STD 1.5 M x 2 NG	50	M42x1,5	500	148	5000 - 175000	70 - 150	1,7
STD 1.5 M x 3	75	M42x1,5	750	182	55 - 9500	60 - 130	2,1