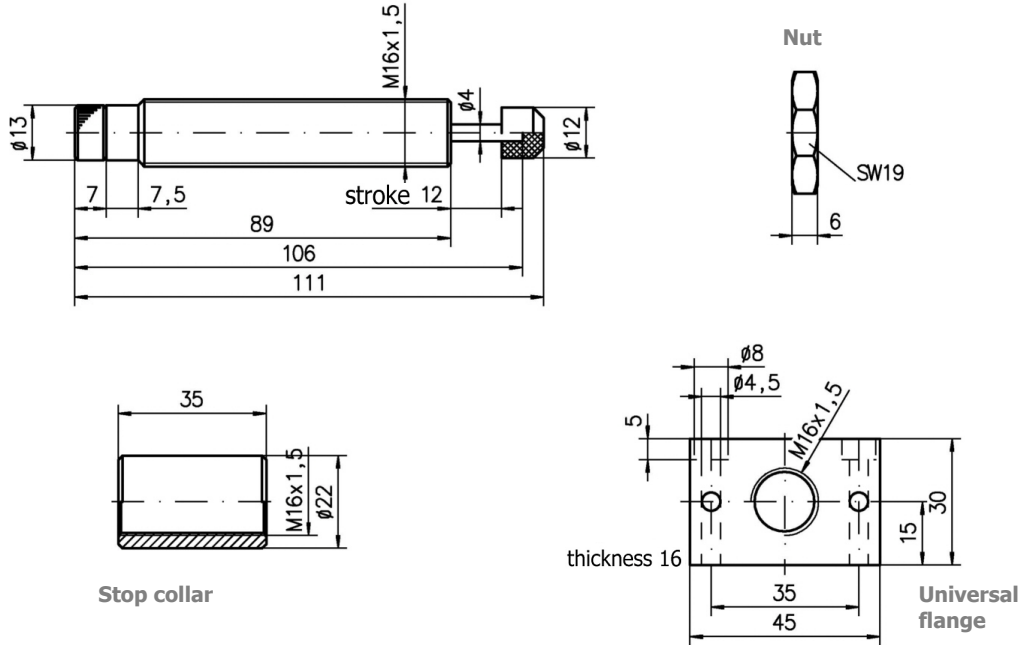


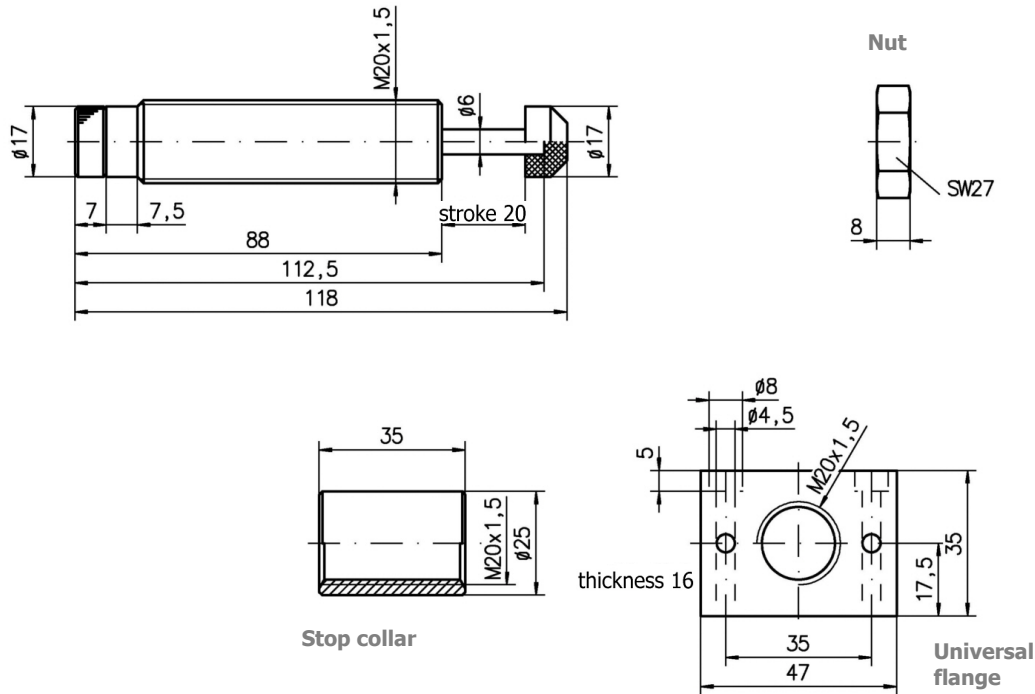


- Fully adjustable.
- Temperature range from - 10 °C to + 80 °C (higher temperature up to + 120 °C on request).
- Fitting according to your requirements.
- Nylon cap optional.
- Install a mechanical stop 1 mm before end of the stroke, do not bottoming under load to prevent damage.

STD 10 x 12



STD 10 x 20



Type	Stroke [mm]	Thread	Energy capacity		Effective mass [kg]	Spring force [N]	Weight [g]
			[Nm/stroke]	[kJm/h]			
STD 10 x 12	12	M16x1,5	18	26	1,5 - 160	4 - 11	90
STD 10 x 20	20	M20x1,5	30	46	2,5 - 240	7 - 20	130