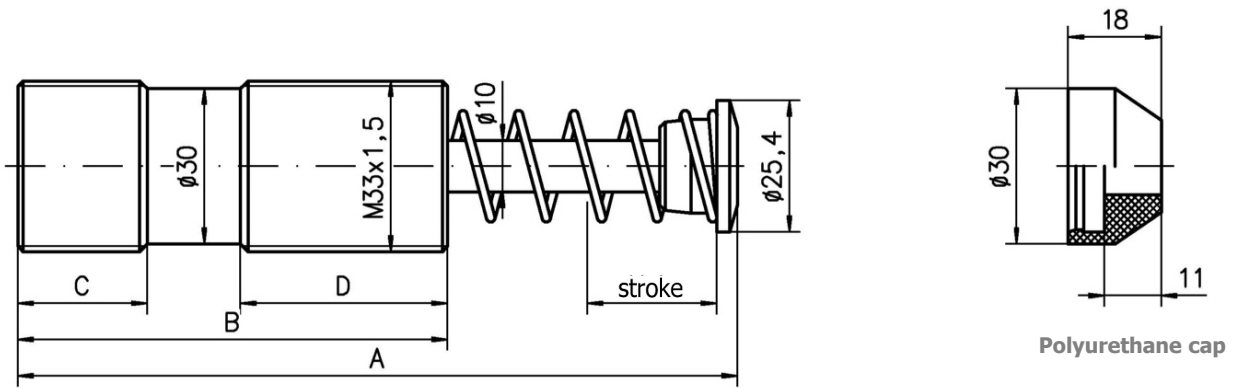




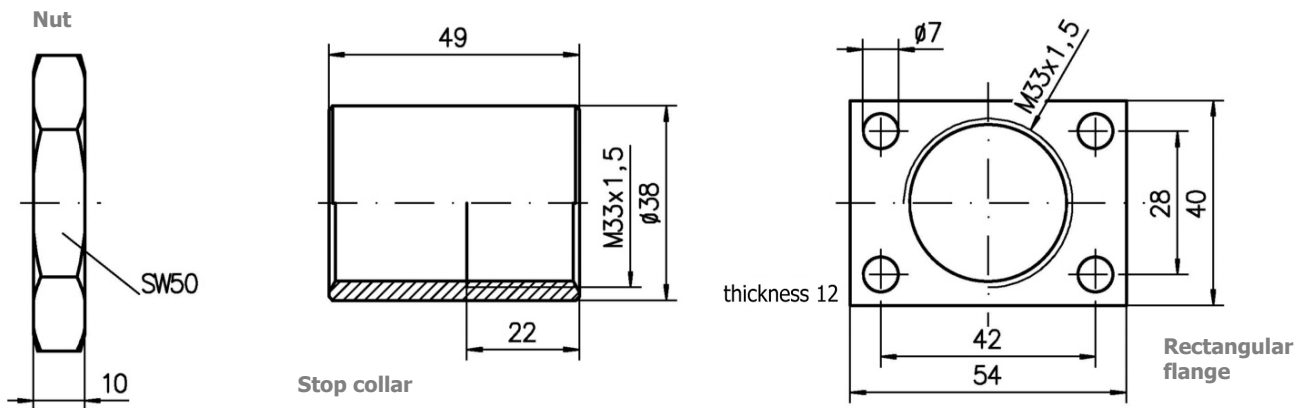
- Temperature range from – 10 °C to + 80 °C (higher temperature up to + 120 °C on request).
- Fitting according to your requirements.
- Polyurethane cap optional.
- Install a mechanical stop 1 mm before end of the stroke, do not bottoming under load to prevent damage.

SES 1.15 M



Dimensions:

Type	Stroke	A	B [mm]	C	D
SES 1.15 M x 1	25	139	83	25	40
SES 1.15 M x 2	50	189	108	30	60



Technical data:

Type	Stroke [mm]	Thread	Energy capacity		Effective mass [kg]	Spring force [N]	Weight [g]
			[Nm/stroke]	[kNm/h]			
SES 1.15 M x 1 A	25	M33x1,5 or 1 1/4" – 12 UNF	100	76	25 - 110	40 - 70	410
SES 1.15 M x 1 B	25		100	76	3 - 28	40 - 70	410
SES 1.15 M x 1 AA	25		100	76	176 - 960	40 - 70	410
SES 1.15 M x 2 A	50	M33x1,5 or 1 1/4" – 12 UNF	200	86	45 - 220	45 - 80	520
SES 1.15 M x 2 B	50		200	86	15 - 65	45 - 80	520
SES 1.15 M x 2 AA	50		200	86	190 - 890	45 - 80	520