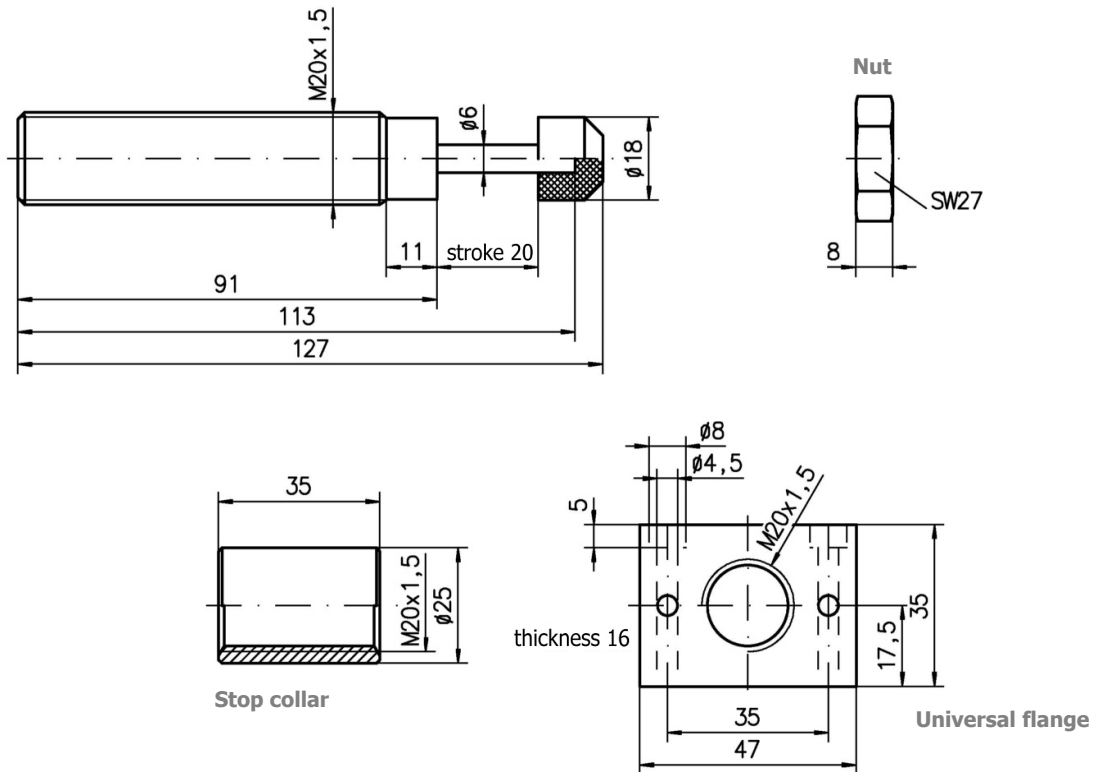
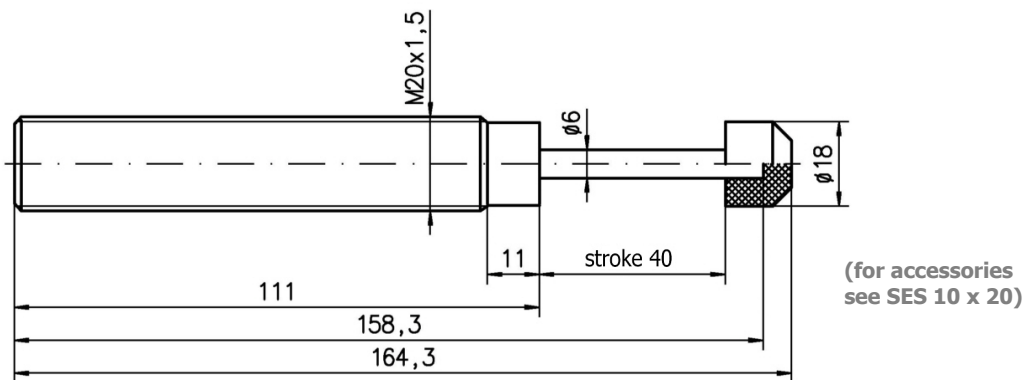



- Temperature range from – 10 °C to + 80 °C (higher temperature up to + 120 °C on request).
- Fitting according to your requirements.
- Nylon cap optional.
- Install a mechanical stop 1 mm before end of the stroke, do not bottoming under load to prevent damage.

SES 10 x 20



SES 10 x 40



	Type	Stroke [mm]	Thread	Energy capacity		Effective mass [kg]	Spring force [N]	Weight [g]
				[Nm/stroke]	[kNm/h]			
	SES 10 x 20 A	20	M20x1,5	30	46	24 - 240	7 - 20	170
	SES 10 x 20 B	20	M20x1,5	30	46	3 - 28	7 - 20	170
	SES 10 x 20 AA	20	M20x1,5	30	46	176 - 960	7 - 20	170
	SES 10 x 40 A	40	M20x1,5	60	56	40 - 500	10 - 25	210
	SES 10 x 40 B	40	M20x1,5	60	56	6 - 60	10 - 25	210
	SES 10 x 40 AA	40	M20x1,5	60	56	300 - 1600	10 - 25	210